

## Easy to use

### Easy Access

SonoSync™ is a web browser-based solution that requires no additional installation on user devices.

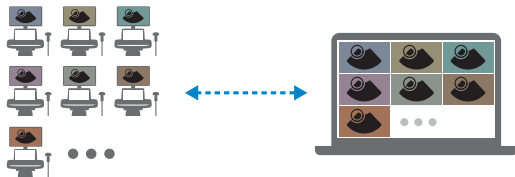
The solution on web browser can be used easily on PC, tablet and smartphone devices with internet connection.



### Multi connection / MultiView

Maximum of 24 people (4 people per one system) can access and share ultrasound images on SonoSync™ at the same time.

The multiple access allows for efficient real-time communication, collaboration and training across various regions.

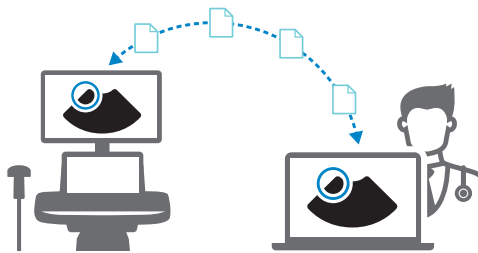


## Quick Sharing

### Video Streaming & Instant Image

Users of the SonoSync™ have the option of sharing the ultrasound image or real-time video streaming in its original high-resolution without any quality loss.

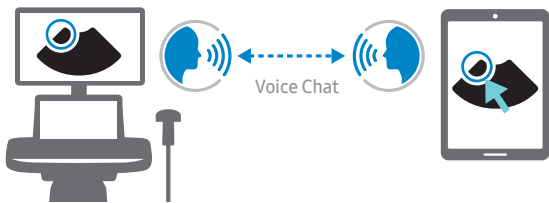
The image and video transfers are secure as the images and cines are not saved on user devices.



### Voice chat & Marking

Collaboration is made easy and efficient with the Marking and Voice Chat functions.

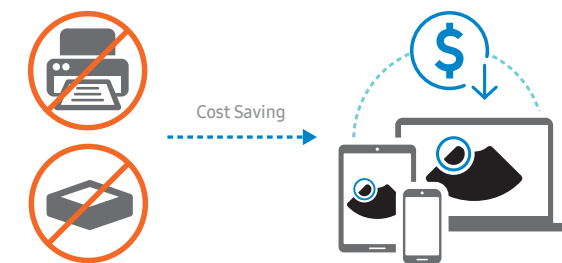
Click and drag on image to mark specific regions using the Marking function, which designates users with individual colors. Talk to the other user with Voice Chat equipped with noise dampening technology.



## Efficient Management

### Built-in solution

Samsung ultrasound equipped with SonoSync™ software can create a real-time image sharing system over the server without any additional hardware.



### Live security

All ultrasound images, as well as user and patient information are safely protected on SonoSync™ with advanced encryption.



## System Requirements

RECOMMENDED REQUIREMENTS	
Server	<ul style="list-style-type: none"><li>· CPU: Intel Xeon 4 Core, 3.00 GHz or better</li><li>· RAM: 32 GB or more</li><li>· Disk: 50 GB or more</li><li>· NIC: 1 Gbps Ethernet or faster</li><li>· OS: Windows Server 2016 or later</li><li>· VM: Supported</li></ul>
Viewer - PC/MAC	<ul style="list-style-type: none"><li>· CPU: Core i5 and above</li><li>· RAM: 8GB and more</li><li>· Resolution: 1920 x 1080 pixel resolution or recommended</li><li>· OS: Windows 10 64bit or later OSX 10.11 or later</li><li>· Web Browser: Chrome v63 and above recommended</li></ul>
Viewer - Mobile	<ul style="list-style-type: none"><li>· OS: Android 7.0 or later</li><li>· Web Browser: Mobile Chrome v63 and above</li></ul>

### Mobile Device Recommendations

- Phone: Samsung Galaxy S8 or later
- Tablet: Samsung Galaxy Tab S4 or later

### About Samsung Medison CO., LTD.

Samsung Medison, an affiliate of Samsung Electronics, is a global medical company founded in 1985. With a mission to bring health and well-being to people's lives, the company manufactures diagnostic ultrasound systems around the world across various medical fields. Samsung Medison has commercialized the Live 3D technology in 2001 and since being part of Samsung Electronics in 2011, it is integrating IT, image processing, semiconductor and communication technologies into ultrasound devices for efficient and confident diagnosis.

- \* This features are not commercially available in all countries.
- \* Due to regulatory reasons their future availability cannot be guaranteed. Please contact your local sales network for further details.
- \* SonoSync™ is a function for image sharing, not for diagnosis.

### SAMSUNG MEDISON CO., LTD.

© 2019 Samsung Medison All Rights Reserved.  
Samsung Medison reserves the right to modify the design, packaging, specifications, and features shown herein, without prior notice or obligation.

### NETWORK REQUIREMENTS

- Ports
- TCP 443: https (Web / WebSocket)
  - TCP 1935: WebRTC
  - TCP 4431: https (Web / WebSocket)

- Bandwidth
- Server: 100 Mbps or more
  - Ultrasound System: 3 Mbps or more per each
  - Viewer: 3 Mbps or more per each

### OTHER REQUIREMENTS

- SMTP
- Account registration/Password recovery

# Real-time collaborative solution

SonoSync™



SAMSUNG

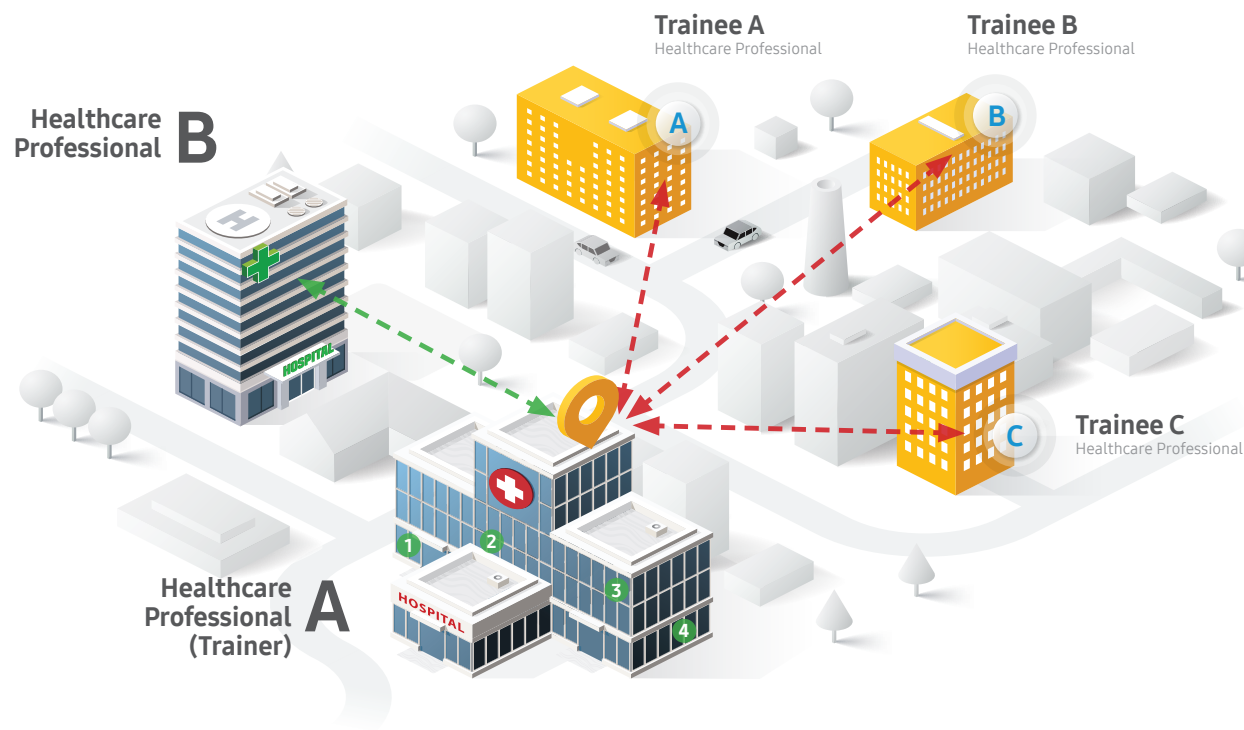


# WORK TOGETHER IN REAL-TIME FROM ANYWHERE

SonoSync™ is Samsung’s innovate ultrasound live streaming solution that lets you share high-quality ultrasound images on PC, smartphone and other mobile devices for instant collaboration, guidance and training. Use the voice chat and real-time marking for more efficient communication and monitor multiple ultrasound images on a single screen with the MultiVue.



Collaboration, monitoring and education can be carried out real-time regardless of where the trainers and trainees are located.



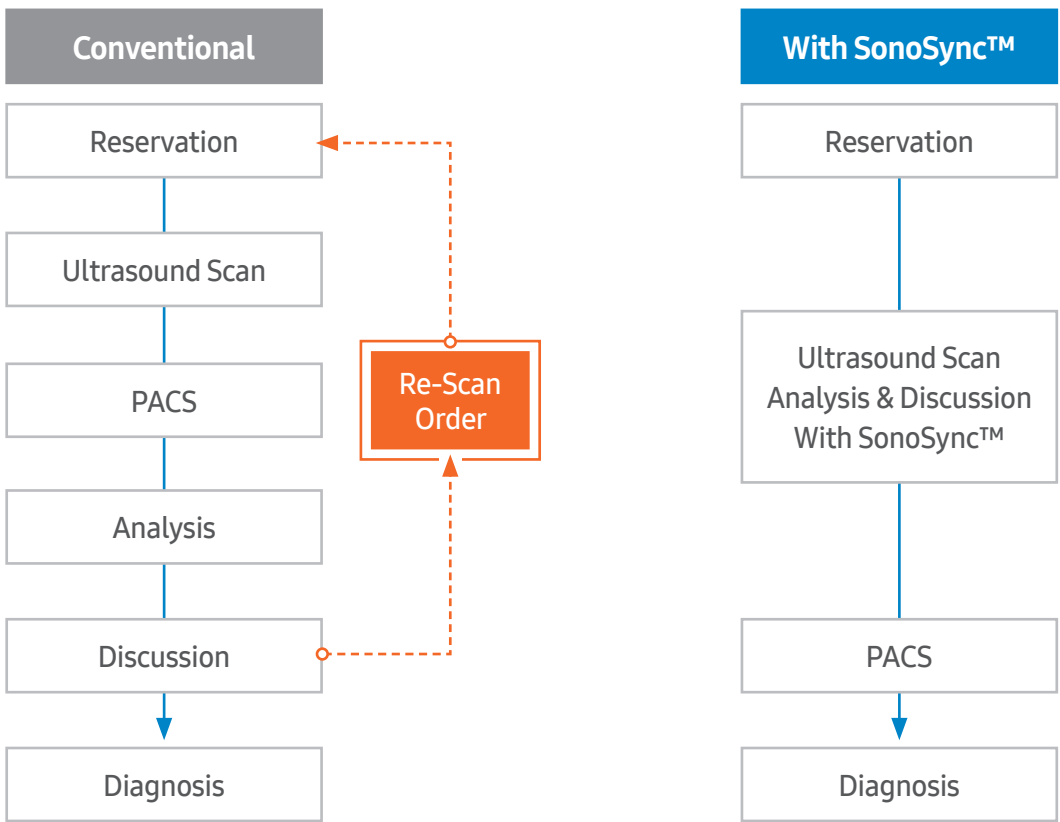
## SONOSYNC™ RELEASE AT SHO

We plan to use the live streaming solution because our organization has many locations (40!) where we perform ultrasound examinations. We move the systems around. This is the way to help our sonographers with some difficulties they counter during the examination and now have the possibility to contact their supervisor. The sonographers work alone on these locations.



SonoSync™ has saved time and cost by enabling real-time monitoring and supervision for various locations at the same time.

Supervising, monitoring and training doctors and sonographers across various regions took a lot of preparation and time. By using SonoSync™, doctors and sonographers became able to connect and collaborate real-time and share images over long distances instantly. Allowing users to share and see the same high-quality images in almost real-time, supervision and training across regions became much easier.



Excellent image quality and speed of sharing, as well as marking and voice chats greatly enhanced real-time interaction and communication.

SonoSync™ satisfied the need for good image quality and resolution through high frame rate real-time image transfer. Users found the marking and voice chatting especially useful for real-time communication and collaboration. By using the solution, doctors and sonographers spread across wide regions were able to work together in real-time using their mobile and tablet devices.

Also, hospital staff and patient satisfaction were increased because SonoSync™ reduced the need for revisits and rescans with accurate, high-quality imaging.

The solution is convenient to set up since it is embedded in the ultrasound system.

Embedded software like SonoSync™ was easy to use compared to having to install hardware boxes especially since the ultrasound systems were moved around to different locations. SonoSync™ is constantly upgraded with latest updates and useful functions.

\* SonoSync™ should not be used for diagnostic purposes at all times

“

Embedded software like SonoSync™ is good to have instead of hardware boxes since we move the ultrasound systems around to different locations. On that location we only have one internet connection point for the system.

”

SHO  
Ultrasound Manager

